



# NEW Adult ICU Indicators Dashboard EPIMED MONITOR SYSTEM

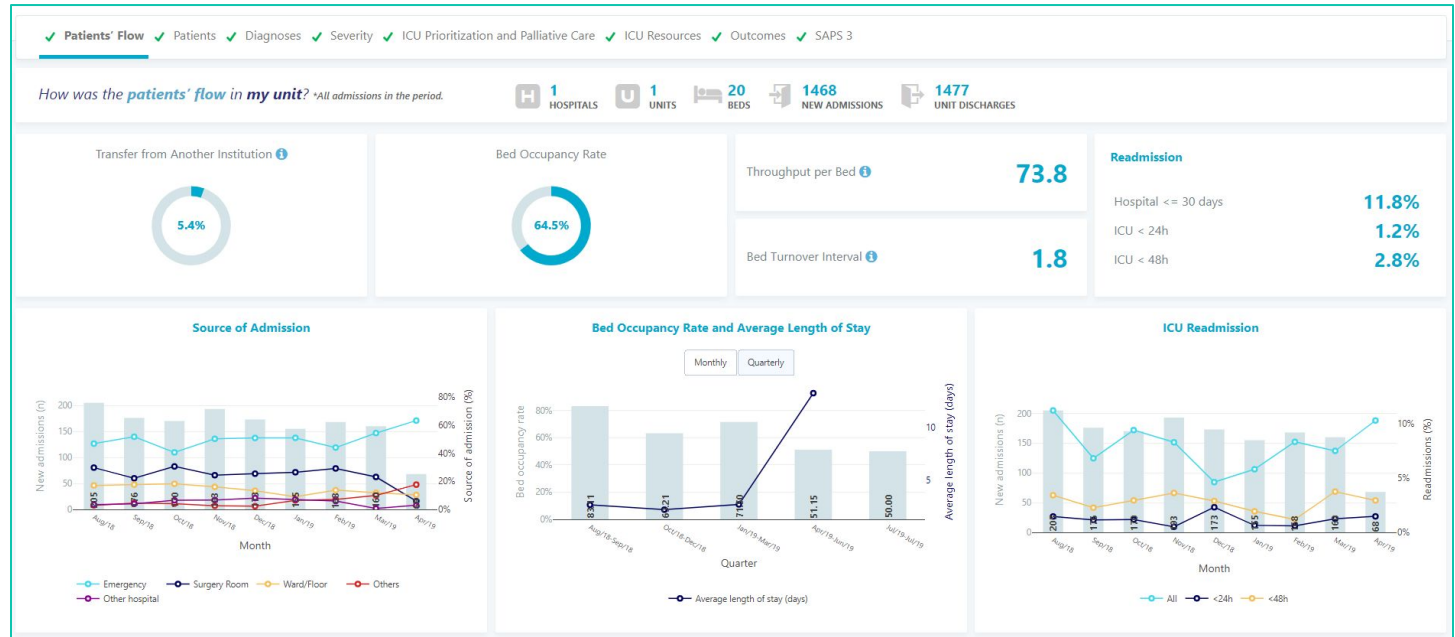
## USER MANUAL

# NEW Adult ICU Indicators Dashboard EPIMED MONITOR SYSTEM

2

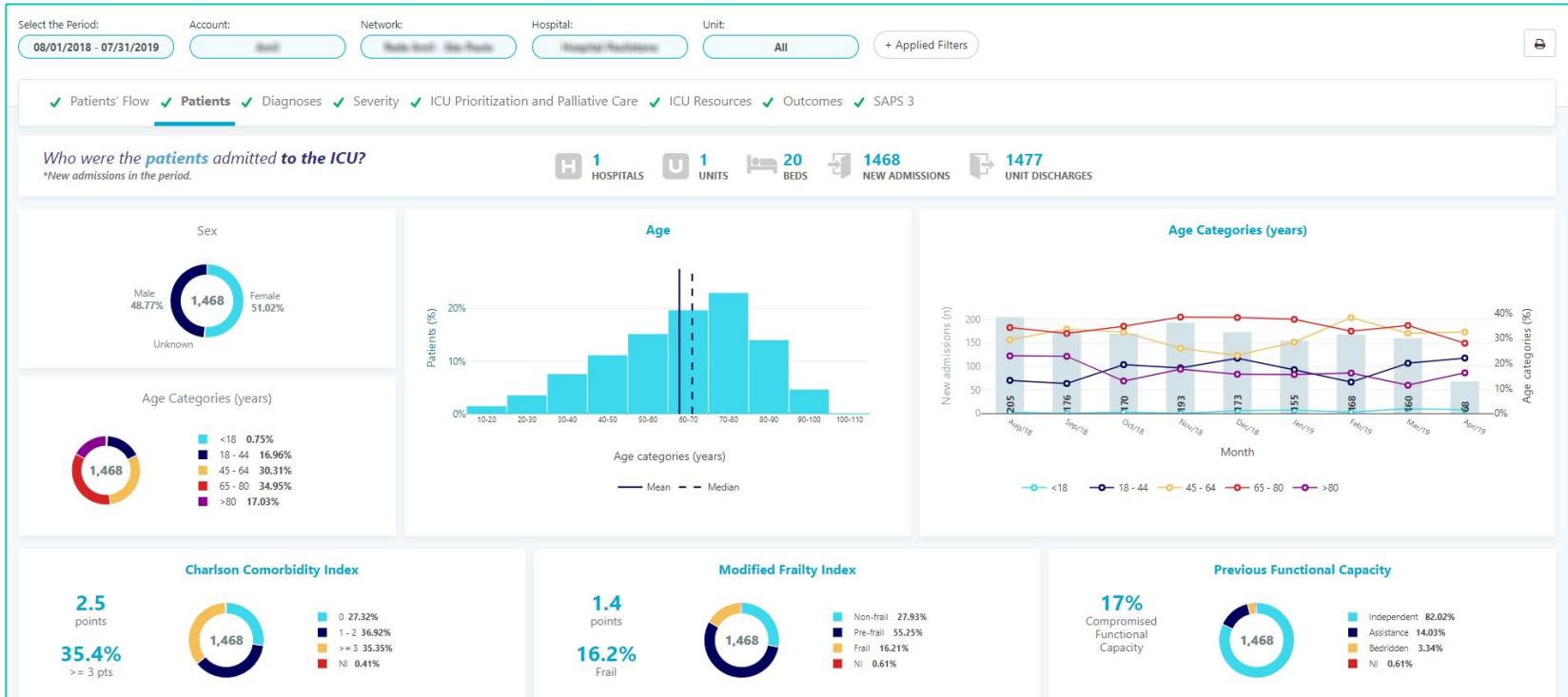
# Hello!

Epimed Monitor's "Adult ICU Indicators" dashboard has a new, more dynamic and modern layout that makes the evaluation of your ICU indicators easier.



# NEW Adult ICU Indicators Dashboard

## EPIMED MONITOR SYSTEM



NEW

# Adult ICU Indicators Dashboard

EPIMED MONITOR SYSTEM



## Assessing indicators in your ICU is now easier

- New, more dynamic and interactive layout
- New tables, charts and other reporting formats
- A comprehensive set of indicators for assessing the patient profile, resource use and performance of your ICU

# NEW Adult ICU Indicators Dashboard

## EPIMED MONITOR SYSTEM



### Here is what's new:


- A new, more dynamic and modern layout that makes the evaluation of your ICU indicators easier.
- The query period has also changed. Now you can have queries for 6, 12, 36 months, or for whatever period you need.
- The new trending charts in monthly, quarterly or annual formats.
- Just click on the “Period” selection filter, choose the period according to your needs and then click on Run.

# NEW Adult ICU Indicators Dashboard

## EPIMED MONITOR SYSTEM

Filters ICU Indicators Dashboard

Select the Period

 Last 12 months



Last 6 months

**Last 12 months**

Last 36 months

Last year

Other period

+ Filters  

Select


Account

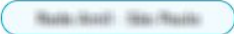
Network


Hospital

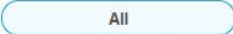
Unit


08/01/2018 - 07/31/2019

Account: 

Network: 

Hospital: 

Unit: 

+ Applied Filters 

# NEW Adult ICU Indicators Dashboard EPIMED MONITOR SYSTEM



## Here is what's new:

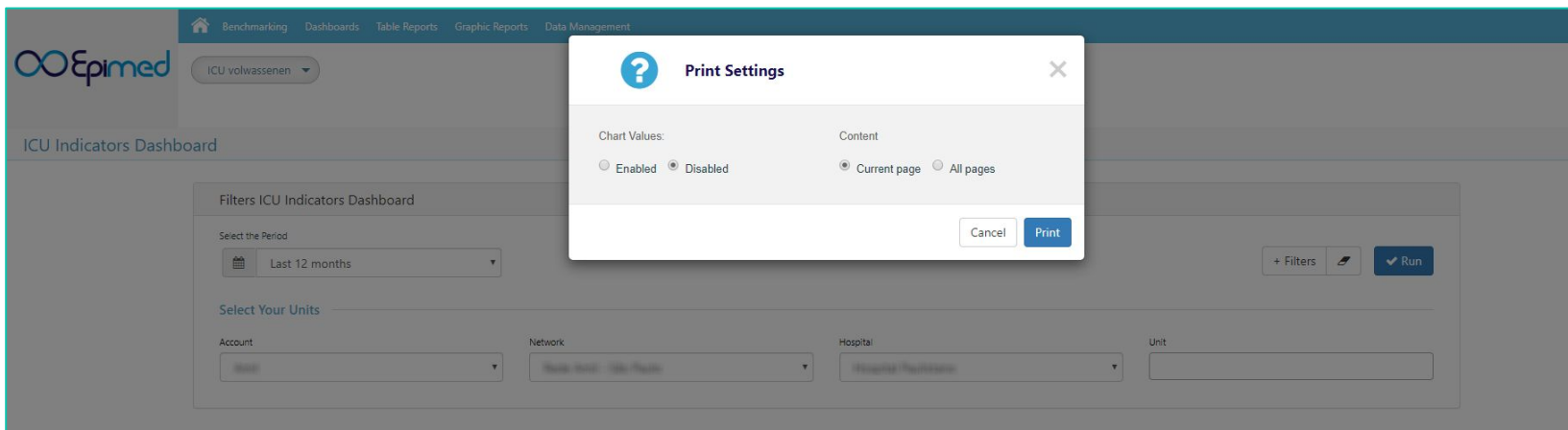
Your ICU indicators are now sorted according to content domains, and are presented in a sequence that facilitates their interpretation and correlation.

The screenshot shows a dashboard interface with a red border. At the top, a navigation bar contains several menu items, each with a green checkmark: Patients' Flow, Patients, Diagnoses, Severity, ICU Prioritization and Palliative Care, ICU Resources, Outcomes, and SAPS 3. Below this, a section titled "Severity-of-illness Categories According to SAPS 3:" has a blue "All" button selected, with other options for "Low (1° tertile)", "Intermediate (2° tertile)", and "High (3° tertile)". The bottom section, titled "What was the clinical performance of my ICU?", includes an information icon and a note: "\*Patients discharged from the unit in the period." To the right of this text are five data points with icons: 1 HOSPITALS (H icon), 1 UNITS (U icon), 20 BEDS (bed icon), 1468 NEW ADMISSIONS (person with arrow icon), and 1477 UNIT DISCHARGES (person with arrow icon).

# NEW Adult ICU Indicators Dashboard EPIMED MONITOR SYSTEM

## Here is what's new:

Now you can also have your dashboards in printable format.



The screenshot displays the Epimed Adult ICU Indicators Dashboard interface. A modal dialog box titled "Print Settings" is overlaid on the dashboard. The dialog box contains the following options:

- Chart Values:**  Enabled  Disabled
- Content:**  Current page  All pages

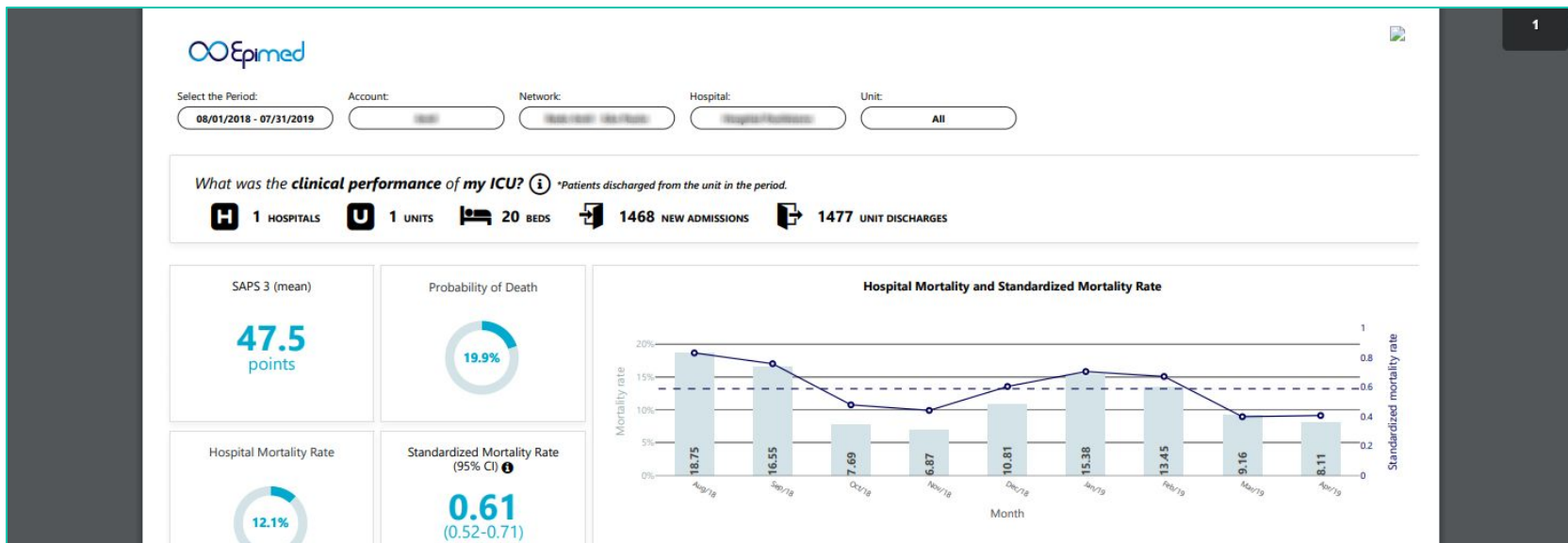
At the bottom of the dialog box, there are "Cancel" and "Print" buttons. The background dashboard shows a navigation menu with "Benchmarking", "Dashboards", "Table Reports", "Graphic Reports", and "Data Management". The main content area is titled "ICU Indicators Dashboard" and includes a "Filters ICU Indicators Dashboard" section with a "Select the Period" dropdown set to "Last 12 months". Below this, there are "Select Your Units" filters for "Account", "Network", "Hospital", and "Unit".



# NEW Adult ICU Indicators Dashboard

## EPIMED MONITOR SYSTEM

Here is what's new:



# Where can I get more information?

Epimed User Support is ready to answer your questions and concerns on **+55 (21) 3550-5125** Monday-Friday from 7AM to 7PM or via email on: [suporte@epimedmonitor.com](mailto:suporte@epimedmonitor.com)

[www.epimedolutions.com](http://www.epimedolutions.com)

